

# How to apply for university accommodation

With additional guidance for disabled or neurodivergent prospective students



# Timeline for applying for university accommodation



Apply as soon as you can to secure the right space for you!

- **March – May: Applications open**

Applications usually open shortly after you receive and accept your academic offer. At this stage, research your accommodation preferences, pricing, and catering options so you are ready to submit your choices as soon as possible.

- **June – August: Guarantee deadlines**

This is when accommodation guarantee deadlines typically occur. Meeting this deadline means the university will guarantee you a room, though not necessarily your first choice.

- **August results day: Room allocations**

Universities process most applications after UK A-level results are released and academic offers are officially confirmed. You will receive your specific room offer via email shortly after results day.

- **September/October: Move-in**

After accepting your housing offer, your room number and arrival instructions will be sent out.



# How to apply for accommodation

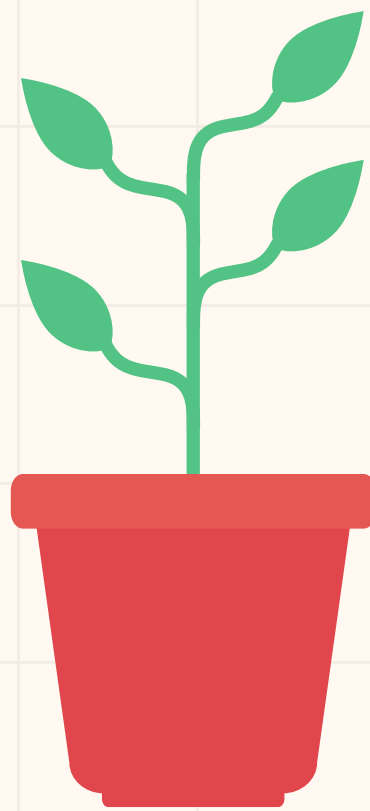
1. Make your chosen university your firm choice
2. Research student housing options at your chosen institution
3. Find the right university accommodation for you as a disabled learner
4. Rank your housing preferences
5. Accept and secure your offer



Remember to think about what your budget is.

# 1. Make your chosen university your firm choice

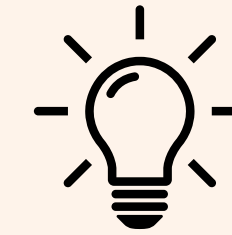
Decide which university is your firm choice and confirm this on your UCAS account.



Talk your decision through with someone you trust.

## 2. Research student housing options. Where do you want to live?

- **University halls of residence**



Tour different accommodation in person or virtually.

Managed directly by the university and popular with undergraduates. Usually on or near campus. Options include en-suite or shared bathrooms, catered or self-catered.

- **Private halls of residence**

Managed by large companies (like Unite Students). They often feature on site gyms, and en suite rooms.



## 2. Research student housing options. Where do you want to live?

- **Shared student houses**

Houses or flats usually found in residential student areas. Often favoured by second or third year students looking to share a space with a communal kitchen and bathroom. You can also rent by yourself.

- **Rented apartments**

Renting a flat through a letting agent which isn't necessarily student specific. Ideal for postgraduates looking to share or live by themselves.



# 3. Find the right university accommodation for you as a disabled learner

- **Declare your disability on your UCAS application if you are comfortable doing so.**

Sharing your condition helps your chosen university to understand who you are and that you will require support. You can also apply for Disabled Student Allowance (DSA) if you have a diagnosis.

- **Get in touch with your chosen university's student disability services**

The disability services can help you to find the right accommodation for you (and help with other parts of student life).



# 3. Find the right university accommodation for you as a disabled learner



- Under the Equality Act 2010 you are entitled to reasonable adjustments which can include accessible accommodation.

**University accommodation** must attempt to find you accommodation that suits your needs.

For **private accommodation** letting agents should make it easy for you to find a home and landlords should make reasonable adjustments for you to live there.

# Factors to consider when choosing accommodation

- **Location and mobility**

Consider proximity to campus and public transport as well as ground floor rooms and lifts.

- **Carer's room**

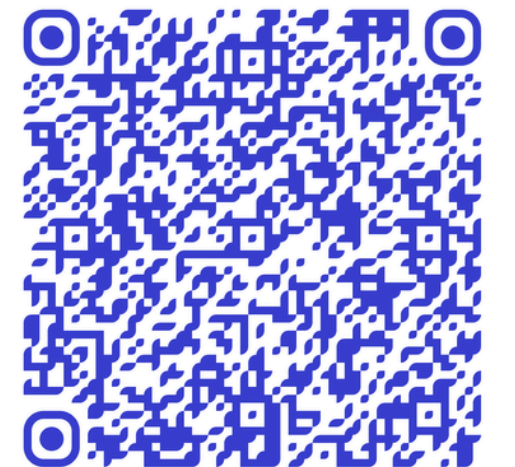
If you require a live in carer, discuss this early on with your university.

- **Evacuation procedure**

Work with the university to make a Personal Emergency Evacuation Plan (PEEP).



Accommodation support on the Disability Rights UK website



# Factors to consider when choosing accommodation

- **Adapted facilities**

Think about the specific adaptations you need; handrails, wet rooms, step free access, flashing fire alarms, or a hoist.

- **Neurodivergent and sensory needs**

Vibrating pillows and visual alarms. Sensory spaces, quieter accommodation, early start programmes and move in dates.

- **Medical needs**

Medical grade fridges for medication, sharps bins or the need for assistance animals.

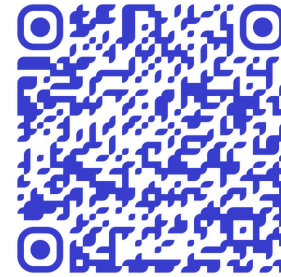


Accommodation support on the Disability Rights UK website

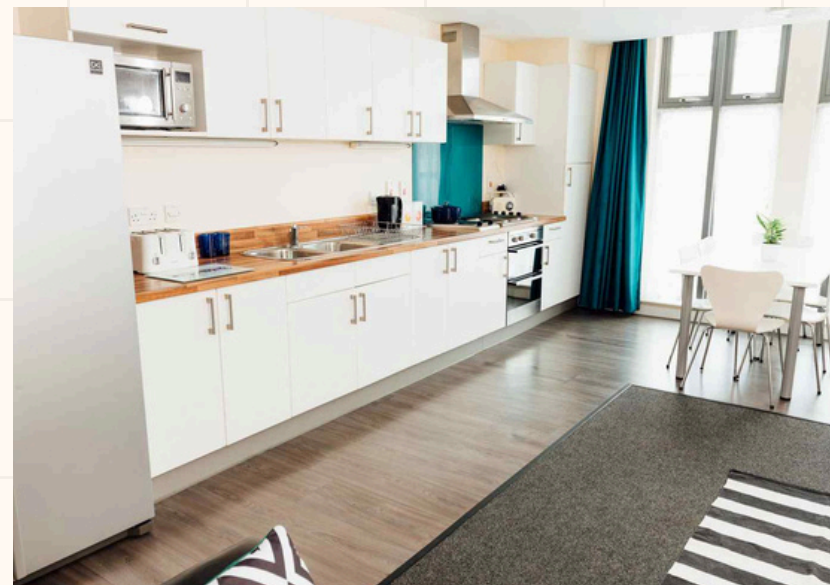


# Example accommodation at York St John University

University halls of residence: St John Central



En suite self catered room



## Steps for speaking to the university about accommodation adaptations:



- Fill out a disability support and inclusion registration form if you have mobility issues, diagnosed physical, mental health conditions or disabilities.
- If you want to bring an assistance animal fill out a request form.
- If you want single sex, alcohol free or quiet housing speak to:  
**[accommodation@yorksja.ac.uk](mailto:accommodation@yorksja.ac.uk)**

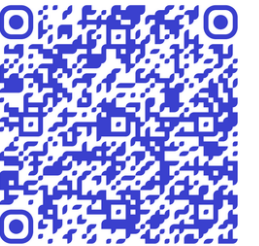


# Example accommodation at Edge Hill University



University halls of residence which can be adapted: Chancellors Court, Chancellors South, Founders West, and Forest Court

## Steps for speaking to the university about accommodation adaptations:



Chancellors Court, Chancellors South:  
En suite self catered room



- Apply for on-campus accommodation as soon as possible
- Contact the accommodation team early: [accommodation@edgehill.ac.uk](mailto:accommodation@edgehill.ac.uk)
- Consider whether you need minor adaptations (grab rail or shower seat for example) or a fully adapted space (automatic doors or extra space for equipment for example).



# Example accommodation at University of Leeds



Charles Morris Hall: En suite self-catered and catered rooms

## Steps for speaking to the university about accommodation adaptations:



- University of Leeds can support disabled, neurodivergent students as well as those with medical conditions and mobility issues.
- Complete the supporting your requirements section of the accommodation application and include supporting evidence.
- The university has examples of requests they can and cannot accommodate on their website.
- Accommodation email address: [accom@leeds.ac.uk](mailto:accom@leeds.ac.uk)



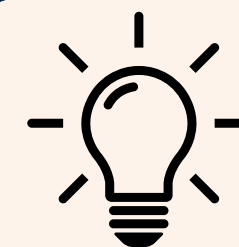
# Example accommodation: Mansion Student



Mansion Student are a **private halls of residence company**. They are often a modern and more luxurious option, usually featuring en suite rooms.

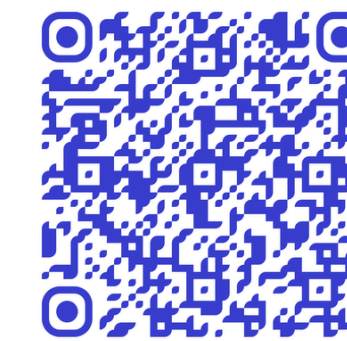
## Steps for researching and choosing private accommodation:

- Speak to your university **disability services** - they can suggest accommodation or help arrange adjustments.
- Look for **key features**: (step free access, lifts, adapted rooms, emergency systems, assistance and proximity to campus).
- Consider **location** - Mansion Students have properties in Leeds, Manchester, Dundee, Durham, Coventry, and Exeter.



This is just one of many private companies

# Example accommodation: sharing or living alone in a private flat or house



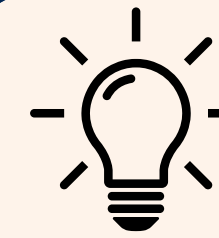
SCOPE - Disabled student accommodation

## Steps for researching private shared and non-shared housing:

- Speak to your university **disability services** - they can suggest adjustments.
- Define the **key features** you need before viewing properties **in person**.
- Consider potential **flatmates** - be open about your **disability** and find housemates through your university's official housing platforms.
- Enquire about **safety measures** - for example emergency evacuation and secure fob entry.



# 4. Rank your housing preferences



Discuss your ideas with someone you trust.

Organise your preferences from most desirable accommodation to least, so if your first choice is full you will be allocated the next best option for you.

Tips for ranking your housing preferences:

- What are your **non-negotiables** and what can you compromise on?
- Think about **contract durations**. Do you need year around accommodation?
- Speak to **existing students** at open days or on online forums
- Use **Goblin Tools** if you need help



Chat to students through the UCAS website

# 5. Accept and secure your offer!



You will receive your specific room offer via email, shortly after results day.



# How can I find out more about university accommodation?



How to apply for university accommodation on the UCAS website



How to find the right university accommodation on the UCAS website



Accommodation for disabled students on the UCAS website



UCAS university packing list

